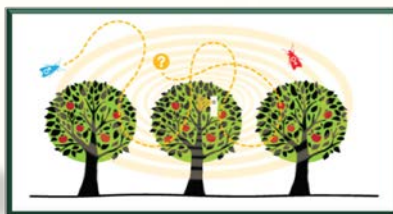


Use of a Host Plant Volatile Blend to Monitor Navel Orangeworm Populations During IPM Treatments in Almond Orchards

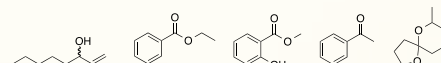
John J. Beck & Bradley S. Higbee



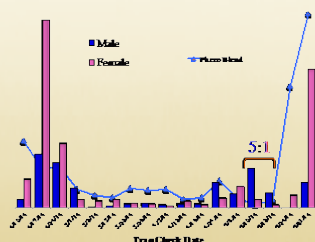
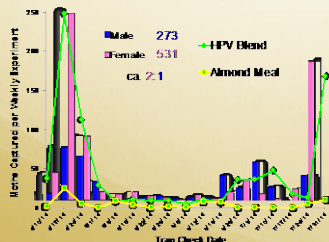
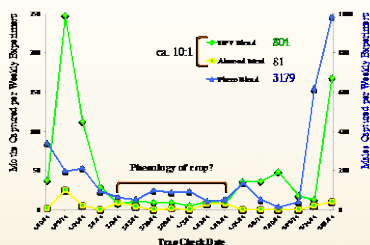
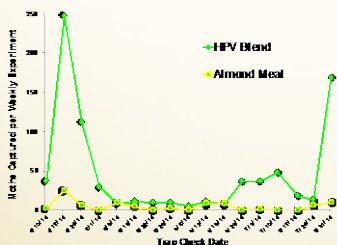
The Project:
determine if the synthetic host plant volatile blend is more attractive than almond meal to male and female NOW moths in orchards under mating disruption compared to conventionally managed orchards



The Goal:
determine if the host plant volatile blend can be integrated as a monitoring tool to provide guidance for pest management practitioners making treatment decisions for NOW



2014 Results (preliminary)



Results Highlights

Blend consistently outperformed almond meal in mating disruption treated and conventional almond orchards

Multidisciplinary Project

Research was conducted under the following projects:
TFCA 58-5325-4-042 Almond Board of California
RCA 5325-42000-037-13 California Department of Food and Agriculture
USDA-ARS CRIS Project 5325-42000-037-00D